



VALYR™

BY STRATA GPO

Project Name: _____

Location: _____

Item #: _____ Qty: _____

Model: _____

SOLID DOOR REACH-IN REFRIGERATORS

MODEL: VALRF-1D VALRF-2D VALRF-3D



VALRF-1D



VALRF-2D



VALRF-3D

Solid Door Reach-In Refrigerators are constructed of a heavy duty stainless steel exterior making them strong and durable enough to survive any kitchen environment. The cooling units are bottom mounted and slide out for easy maintenance and cleaning. All models come with 4" casters and plastic coated wire shelving that is easily removable to adjust the shelf height. The front digital controllers and LED readout makes it easy to adjust the interior temperature. These models are ETL Listed and ETL Sanitation. They are backed with a 2 year warranty on parts and labor and a 5 year warranty on the compressor.

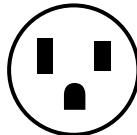
FEATURES AND CONSTRUCTION

- Easy to clean 430 series stainless steel exterior
- Painted white aluminum interior
- Digital temperature control ranges from 33° to 40°F
- 3 epoxy coated corrosion resistant shelves with 90 lb. capacity each
- Self-closing door with stay open feature beyond 90°
- Preprogrammed digital control featuring auto defrost cycle
- Foamed in place insulation helps provide strength while helping to maintain internal temperature
- Eco-friendly R290 hydrocarbon refrigerant
- Ships complete with four or six 4" diameter casters, front locking, rear non-locking

ELECTRIC

115V / 60Hz / 1Ph

8' (2.43m) NEMA 5-15P cord set included



NEMA 5-15P

3RD PARTY APPROVALS



Intertek



Intertek

VALYR WARRANTY (USA)

These units are backed by a 2 year limited parts and labor warranty and a 5 year warranty on the compressors and evaporator. For warranty, non-warranty related issues, and technical support call NSA at 877.672.7740.

NOMINAL STORAGE CAPACITY

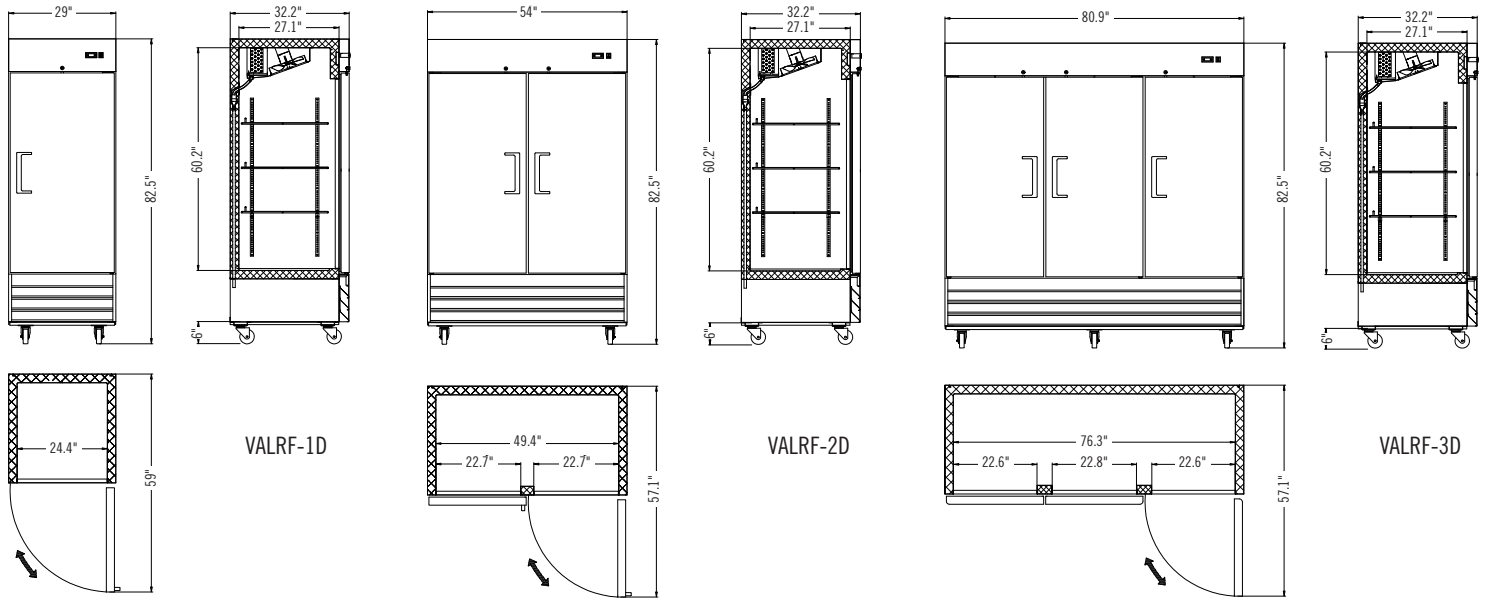
VALRF-1D 23 Cu Ft (583 L)

VALRF-2D 48 Cu Ft (1169 L)

VALRF-3D 72 Cu Ft (1883 L)

TEMPERATURE

Holding Temperature 33°F to 40°F (1°C to 4°C)



MODEL	VALRF-1D	VALRF-2D	VALRF-3D
Type	Solid	Solid	Solid
Doors	1	2	3
Shelves	3	6	9
Volume (Cu. Ft.)	23	48	72
Overall Dimensions (in.)	29"W × 32.2"D × 82.5"H	54"W × 32.2"D × 82.5"H	80.9"W × 32.2"D × 82.5"H
Interior Dimensions (in.)	24.4"W × 27.1"D × 60.2"H	49.4"W × 27.1"D × 60.2"H	76.3"W × 27.1"D × 60.2"H
Refrigerant	R290A	R290A	R290A
Horsepower	1/5	1/4	3/4
Voltage/Hertz/Phase	115/60/1	115/60/1	115/60/1
Amps	3.6	6.2	7.2
Net Weight (lbs)	282 lbs	447 lbs	614 lbs
Shipping Weight (lbs)	321 lbs	535 lbs	693 lbs
Shipping Dimensions (in) W × D × H	30.3"W × 34.1"D × 84.4"H	56.5"W × 34.6"D × 85"H	83.7"W × 34.6"D × 85"H