



VALYR™

BY STRATA GPO

Project Name: _____

Location: _____

Item #: _____ Qty: _____

Model: _____

SALAD/SANDWICH PREP TABLES

MODEL: VALSL-1D VALSL-2D VALSL-2D-60 VALSL-3D



VALSL-1D



VALSL-2D



VALSL-2D-60



VALSL-3D

Salad/Sandwich Prep Tables are constructed of heavy duty stainless steel them strong and durable enough to survive in any kitchen environment. Store all of your condiments, meats and vegetables in the cold topping area that can hold a variety of different sized food pans up to 6” deep. The hinged insulated cover keeps the food items cold when not in service. Store additional items below in the cabinet for quick access when needed. All salad/sandwich prep tables come with 4” casters, plastic coated wire shelving and a 3/4” thick polyethylene cutting board. These models are ETL Listed and ETL Sanitation. They are backed with a 2 year warranty on parts and labor and a 5 year warranty on the compressor.

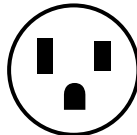
FEATURES AND CONSTRUCTION

- 430 series stainless steel exterior
- Painted aluminum interior
- Environmentally-friendly R290A refrigerant
- Precise digital temperature controller with LED display
- Foamed-in-place polyurethane high density cell insulation throughout the entire cabinet
- Hinged insulated lid
- Removable door gasket
- Recessed door handles
- 3/4” thick removable polyethylene cutting board
- Clear plastic food pans included
- Four (4) 4” diameter casters (2 locking and 2 non-locking)

ELECTRIC

115V / 60Hz / 1Ph

7' (2.13m) NEMA 5-15P cord set included



NEMA 5-15P

3RD PARTY APPROVALS



Intertek



Intertek

VALYR WARRANTY (USA)

These units are backed by a 2 year limited parts and labor warranty and a 5 year warranty on the compressors and evaporator. For warranty, non-warranty related issues, and technical support call NSA at 877.672.7740.

NOMINAL STORAGE CAPACITY

VALSL-1D 6 Cu Ft (170 L)

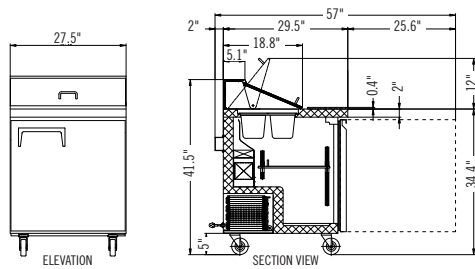
VALSL-2D 12 Cu Ft (340 L)

VALSL-2D-60 15 Cu Ft (425 L)

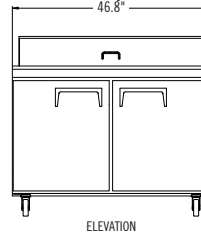
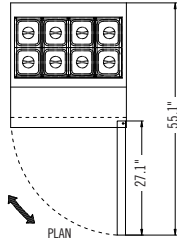
VALSL-3D 18 Cu Ft (510 L)

TEMPERATURE

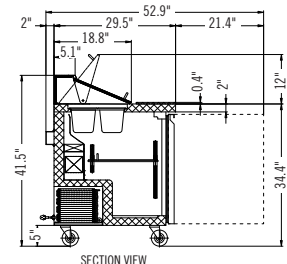
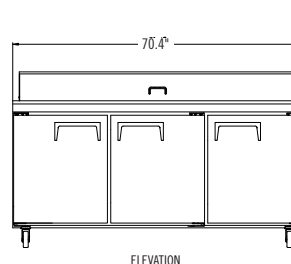
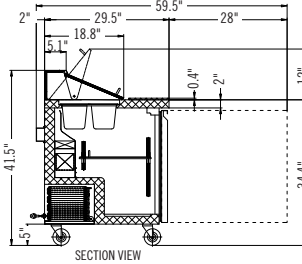
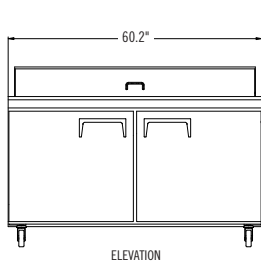
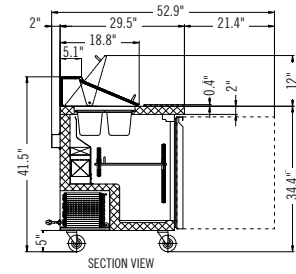
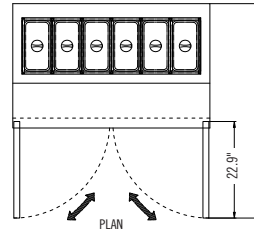
Holding Temperature 33°F to 40°F (1°C to 4°C)



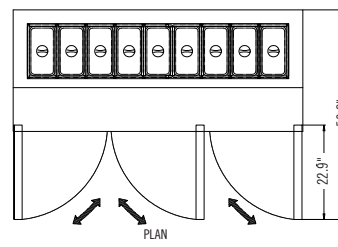
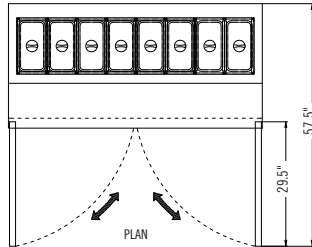
VALSL-1D
Eight (8) 6" deep 1/6 pans



VALSL-2D
Twelve (12) 6" deep 1/6 pans



VALSL-2D-60
Sixteen (16) 6" deep 1/6 pans



VALSL-3D
Eighteen (18) 6" deep 1/6 pans

MODEL	VALSL-1D	VALSL-2D	VALSL-2D-60	VALSL-3D
Doors	1	2	2	3
Shelves	1	2	2	3
Volume (Cu. Ft.)	6	12	15	18
Overall Dimensions (in.)	27.5"W × 29.5"D × 41.5"H	46.8"W × 29.5"D × 41.5"H	60.2"W × 29.5"D × 41.5"H	70.4"W × 29.5"D × 41.5"H
Interior Dimensions (in.)	24.2"W × 19.8"D × 23.5"H	43"W × 19.8"D × 23.5"H	56.5"W × 19.8"D × 23.5"H	66.6"W × 19.8"D × 23.5"H
Refrigerant	R290A	R290A	R290A	R290A
Horsepower	1/5	1/4	4/5	1
Voltage/Hertz/Phase	115/60/1	115/60/1	115/60/1	115/60/1
Amps	3.6	4.9	5.4	7.8
Net Weight (lbs)	176 lbs	253 lbs	319 lbs	343.2 lbs
Shipping Weight (lbs)	231 lbs	348 lbs	416 lbs	572 lbs
Shipping Dimensions (in) W × D × H	32.7"W × 34.6"D × 45.7"H	52"W × 34.6"D × 45.7"H	65.4"W × 34.6"D × 45.7"H	75.6"W × 34.6"D × 45.7"H