



VALYR™

BY STRATA GPO

Project Name: _____

Location: _____

Item #: _____ Qty: _____

Model: _____

MEGA TOP SALAD/SANDWICH PREP TABLES

MODEL: VALSLM-1D VALSLM-2D VALSLM-2D-60 VALSLM-3D



VALSLM-1D



VALSLM-2D



VALSLM-2D-60



VALSLM-3D

Mega Top Salad/Sandwich Prep Tables are constructed of heavy duty stainless steel making them strong and durable enough to survive in any kitchen environment. Store all of your condiments, meats and vegetables in the cold topping area that can hold a variety of different sized food pans up to 6" deep. The oversized hinged insulated cover keeps the food items cold when not in service. Store additional items below in the cabinet for quick access when needed. All salad/sandwich prep tables come with 4" casters, plastic coated wire shelving and a 3/4" thick polyethylene cutting board. These models are ETL Listed and ETL Sanitation. They are backed with a 2 year warranty on parts and labor and a 5 year warranty on the compressor.

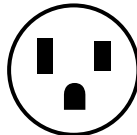
FEATURES AND CONSTRUCTION

- 430 series stainless steel exterior
- Painted aluminum interior
- Environmentally-friendly R290A refrigerant
- Precise digital temperature controller with LED display
- Foamed-in-place polyurethane high density cell insulation throughout the entire cabinet
- Oversized hinged insulated lid
- Removable door gasket
- Recessed door handles
- 3/4" thick removable polyethylene cutting board
- Clear plastic food pans included
- Four (4) 4" diameter casters (2 locking and 2 non-locking)

ELECTRIC

115V / 60Hz / 1Ph

7' (2.13m) NEMA 5-15P cord set included



NEMA 5-15P

3RD PARTY APPROVALS



Intertek



Intertek

VALYR WARRANTY (USA)

These units are backed by a 2 year limited parts and labor warranty and a 5 year warranty on the compressors and evaporator. For warranty, non-warranty related issues, and technical support call NSA at 877.672.7740.

NOMINAL STORAGE CAPACITY

VALSLM-1D 6 Cu Ft (170 L)

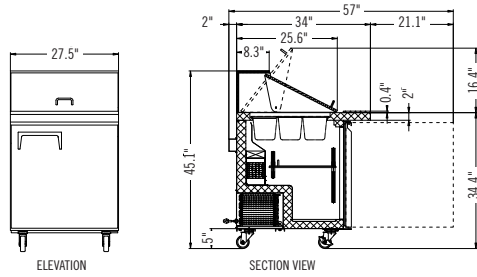
VALSLM-2D 12 Cu Ft (340 L)

VALSLM-2D-60 15 Cu Ft (425 L)

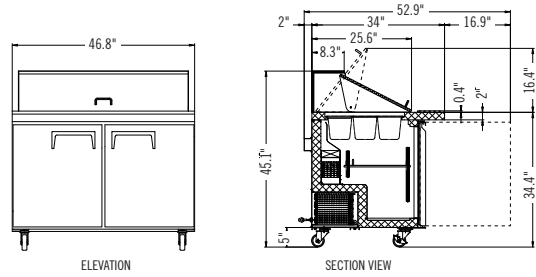
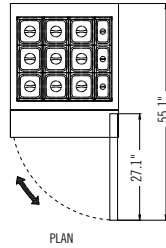
VALSLM-3D 18 Cu Ft (510 L)

TEMPERATURE

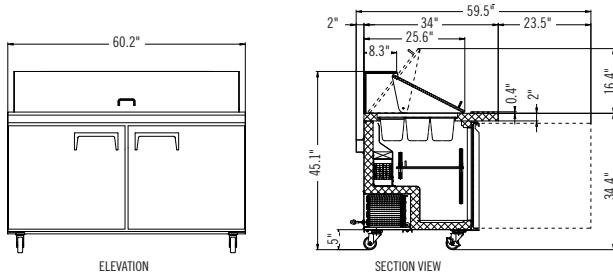
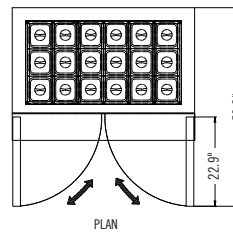
Holding Temperature 33°F to 40°F (1°C to 4°C)



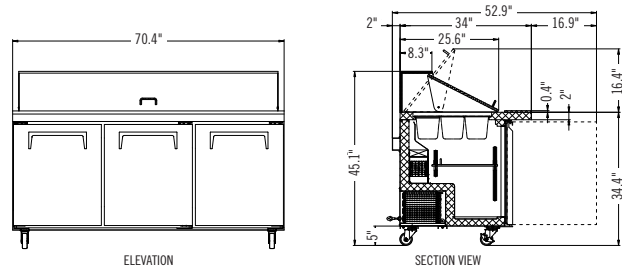
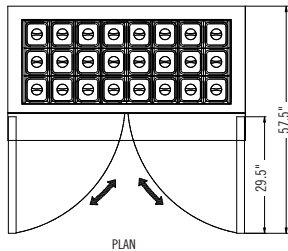
VALSML-1D
Nine (9) 6" deep 1/6 pans, three (3) 1/9 pans



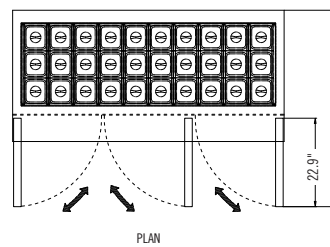
VALSML-2D
Eighteen (18) 6" deep 1/6 pans



VALSML-2D-60
Twenty-four (24) 6" deep 1/6 pans



VALSML-3D
Thirty (30) 6" deep 1/6 pans



| MODEL | VALSML-1D | VALSML-2D | VALSML-2D-60 | VALSML-3D |
|---------------------------------------|------------------------|------------------------|------------------------|------------------------|
| Doors | 1 | 2 | 2 | 3 |
| Shelves | 1 | 2 | 2 | 3 |
| Volume (Cu. Ft.) | 6 | 12 | 15 | 18 |
| Overall Dimensions (in.) | 27.5"W × 34"D × 45.1"H | 46.7"W × 34"D × 45.1"H | 60.2"W × 34"D × 45.1"H | 70.4"W × 34"D × 45.1"H |
| Refrigerant | R290A | R290A | R290A | R290A |
| Horsepower | 1/5 | 1/4 | 4/5 | 1 |
| Voltage/Hertz/Phase | 115/60/1 | 115/60/1 | 115/60/1 | 115/60/1 |
| Amps | 3.6 | 4.9 | 5.4 | 7.8 |
| Net Weight (lbs) | 198 lbs | 275 lbs | 341 lbs | 374 lbs |
| Shipping Weight (lbs) | 251 lbs | 370 lbs | 427 lbs | 576 lbs |
| Shipping Dimensions (in) W × D × H | 32.7"W × 39.2"D × 49"H | 52"W × 39.2"D × 49"H | 65.4"W × 39.2"D × 49"H | 75.6"W × 39.2"D × 49"H |